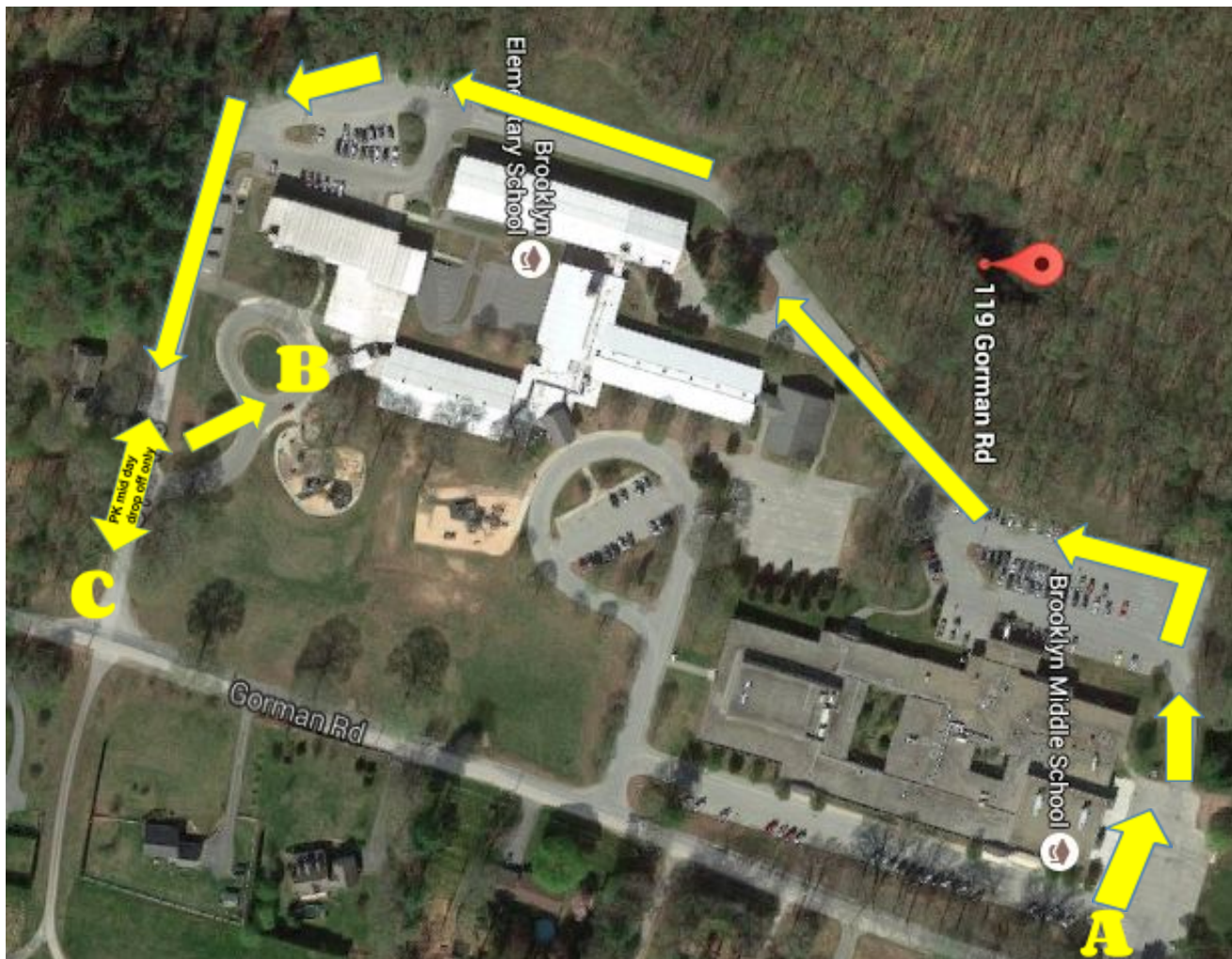


BES/BMS Drop Off and Pick Up Map

Effective January 17, 2018

BES and BMS will be on the same schedule



EXIT ONLY

ENTRANCE ONLY

8:30 – 8:45 AM BES and BMS Student Drop off 3:15-3:30 BES and BMS Student Pick Up

ALL TRAFFIC ENTERS BY BMS AND DRIVES AROUND THE BUILDINGS, EXITS BY BES (EXCEPT MID DAY PK DROP OFF AND PICK UP!)

- BMS Drop Off: pull up as far as possible and drop off by BMS gymnasium
 - BES Drop Off: drive past BMS drop off and proceed behind both buildings to drop off area B
BES drop off wait in line to the LEFT to allow parents or staff to pass on the right
- All cars will exit on School Street to Gorman Road

***If you need to drop off or pick up at both schools: follow the BMS drop off then get in the BES line

11:25 – 11:35 AM	PreK AM Pick up	Enter C	Pick Up B	Exit C
12:30 – 12:40 PM	PreK PM Drop off	Enter C	Drop Off B	Exit C

- Vehicles stay to the right when driving and waiting.
- Vehicles wait at designated cones.
- Please be careful driving through the parking lots. BES/BMS students may be crossing to the fields or adults could be walking in parking lots.

Thank you for your assistance in picking up and dropping off students safely! We care about our students and want to be sure they remain safe!